

# **Desktop POS Printer Bluetooth Connection Manual**

---

(Rev.1.0)

**POS Printer**

# Contents

1. Manual Information.....	1
2. Precautions.....	1
3. General Sequence for Bluetooth Connections.....	1
4. Bluetooth Connection Instructions.....	2
4.1 Bluetooth Dongle.....	2

## 1. Manual Information

This Bluetooth Connection Manual provides information on the connection of Bluetooth enabled devices (PDAs, PCs, etc.) with the printer.

We maintain ongoing efforts to enhance and upgrade the functions and quality of all our products. Product specifications and/or user manual content may be changed without prior notice.

## 2. Precautions

2-1 To connect the printer with another device via Bluetooth, the devices must be within 10m of one another. The connection will be disconnected if the distance between devices exceeds 10m.

2-2 The maximum separating distance may be shortened if transmission obstacles occurs, such as cement walls..

2-3 If a device (such as a microwave oven, wireless LAN, etc.) that uses the same frequency is present, transmission may be interrupted. Separate the printer and Bluetooth-enabled device from such interrupting devices by a distance of at least 5m.

## 3. General Sequence for Bluetooth Connections

Bluetooth connection methods vary by device. The following is the general sequence for Bluetooth connections, provided for reference purposes.

3-1 Turn on power of each device

- PDAs, PCs (Bluetooth Dongle), Printers, etc.

3-2 Run a Bluetooth connection program on the PDA or PC.

3-3 Search for the peripheral with which to establish the connection.

- Search for the printer.

3-4 Register this Printer from the search results.

- If a security setting is enabled, register after inputting the PIN Code.

(PIN Code=Pass Key: password of the Bluetooth device, Default code: 0000)

- You can check the Bluetooth pairing password through self-inspection by printed page view.(Refer to the user's manual for more detail)

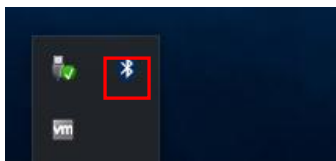
3-5 Test the connection.

- When connected, confirm the designated COM port of fixed COM port and print.

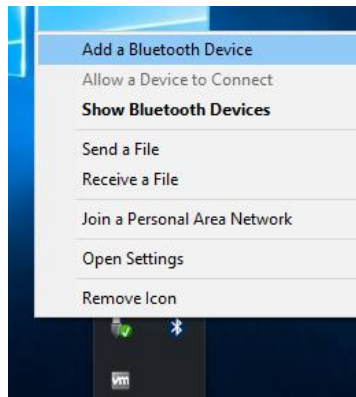
## 4. Bluetooth Connection Instructions

### 4.1 Bluetooth Dongle

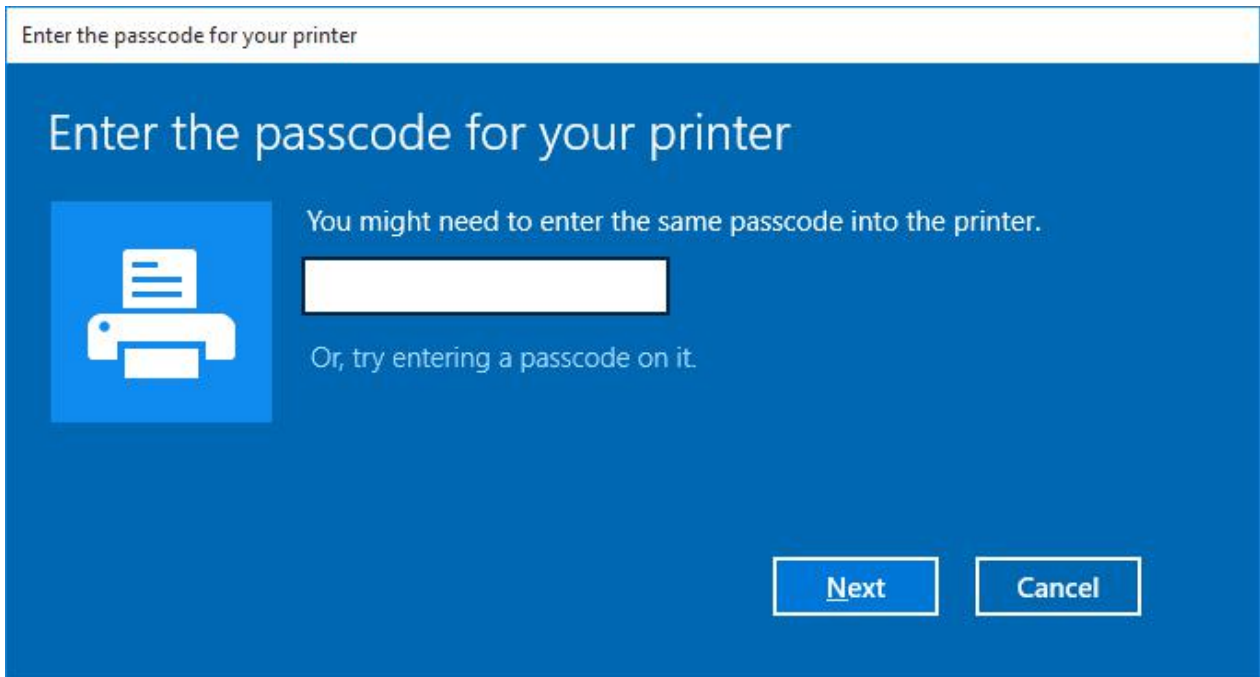
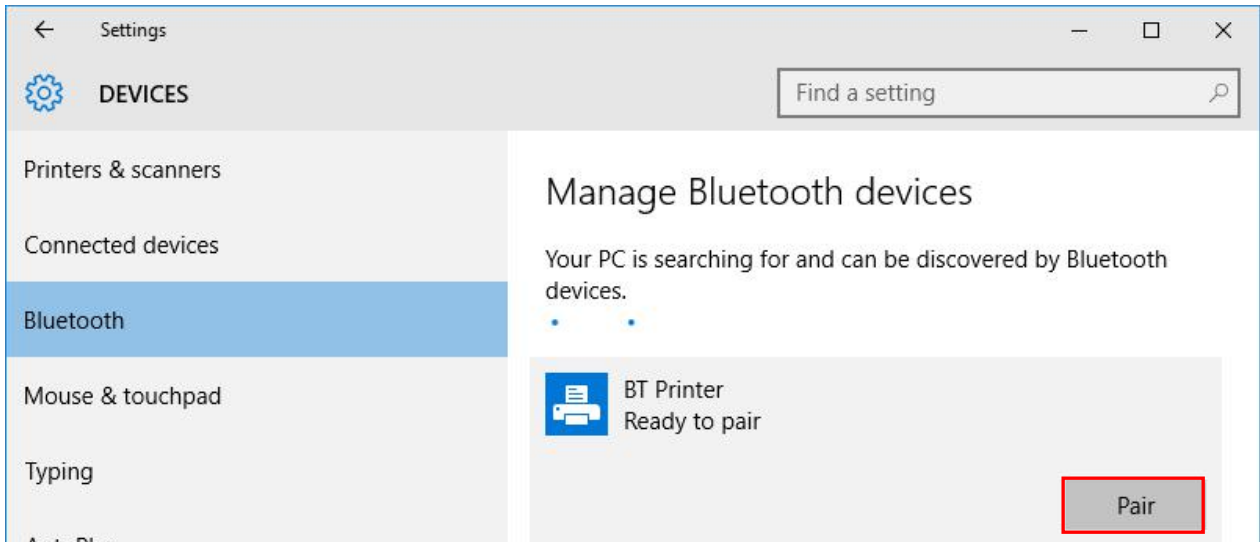
1. Install the Windows Driver program. (Please refer to the Windows Driver Manual)
2. Purchasing Bluetooth Dongle.
3. Connect Bluetooth Dongle to the USB port of the PC.
4. Turn on the printer.
5. After that the Bluetooth icon will appear on the lower right corner of the screen.



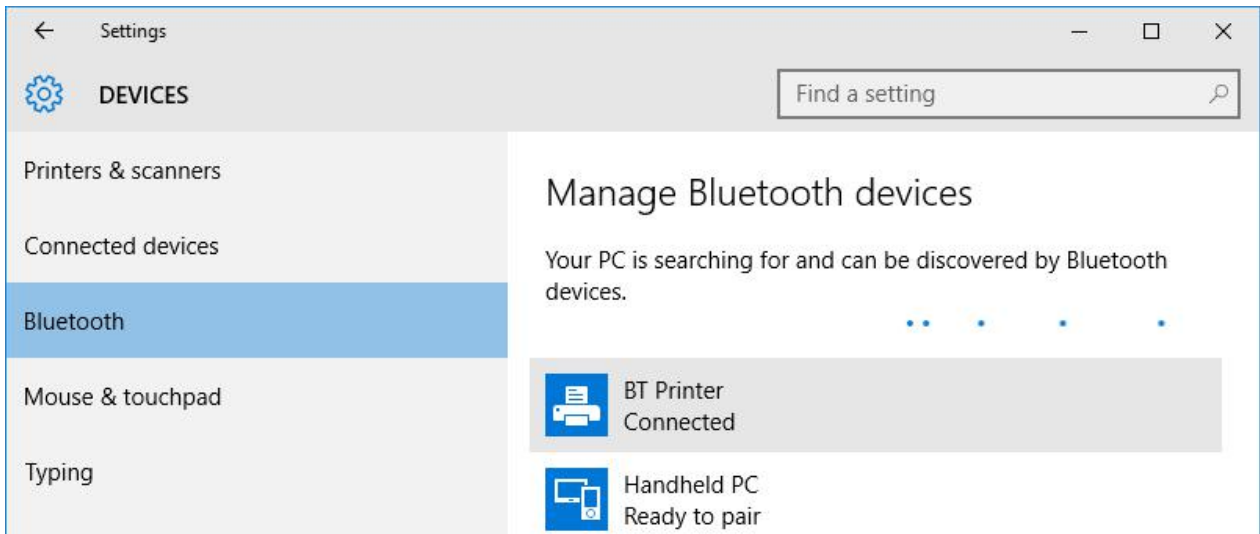
6. Right Click the icon, choose "Add a Bluetooth Device".



7. Choose “Bluetooth”, wait until the Bluetooth device is searched. Choose the right model then click “Pair”, if the printer has a password, you could input the password for pairing.



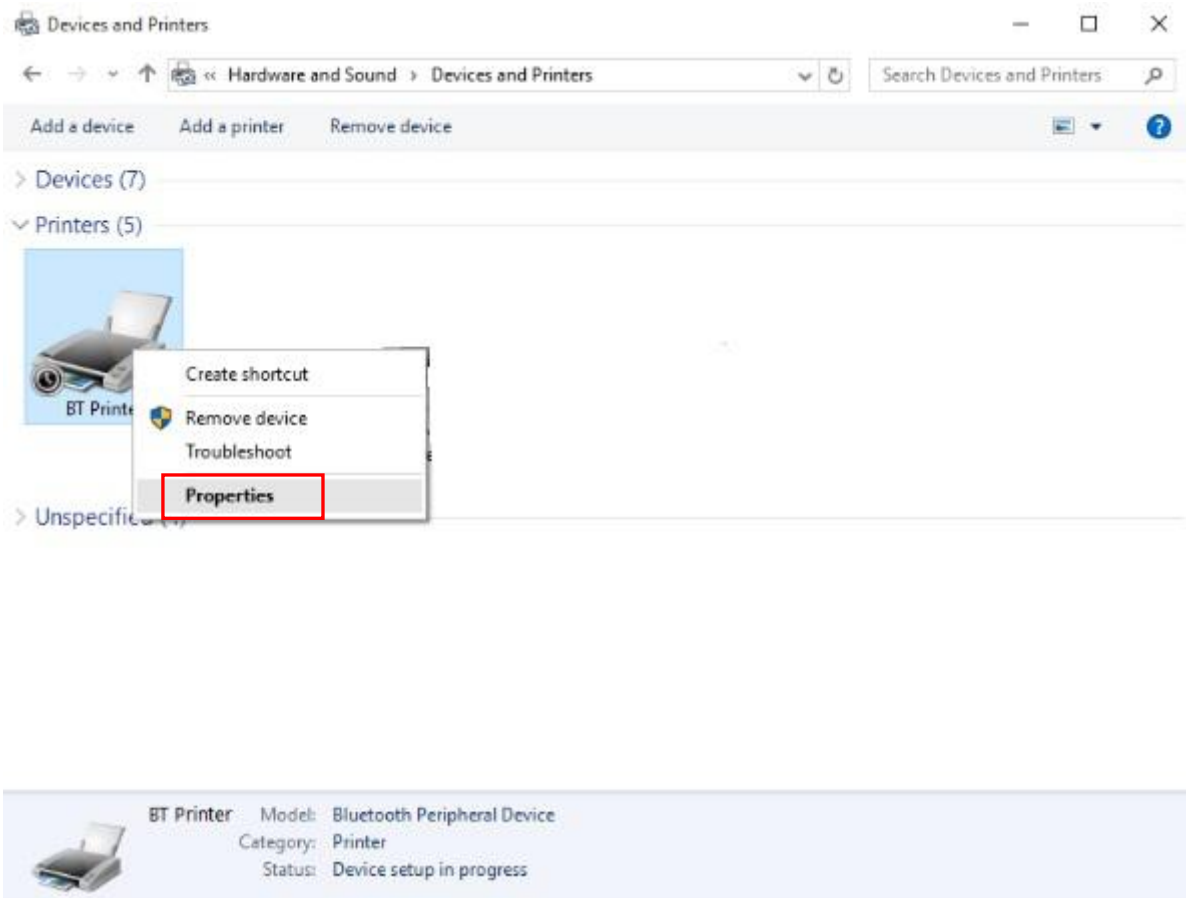
8. The paired connection is successful, as shown below:



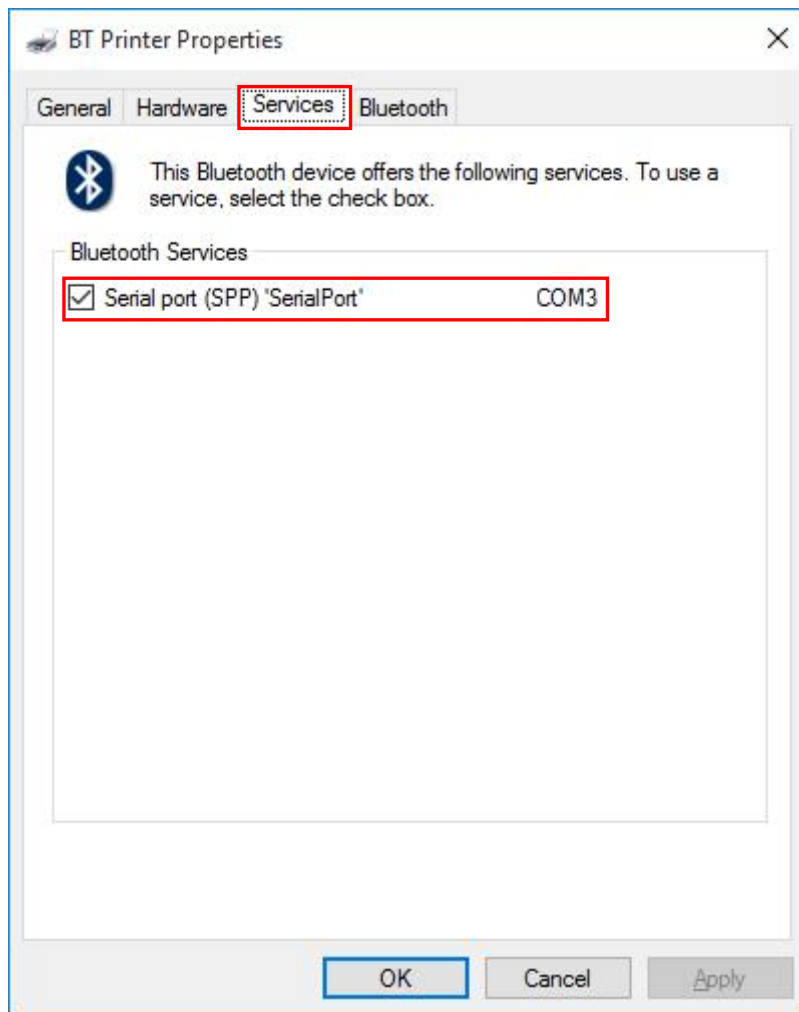
9. Go into the “Devices and Printers”, you can see the corresponding Bluetooth icon.



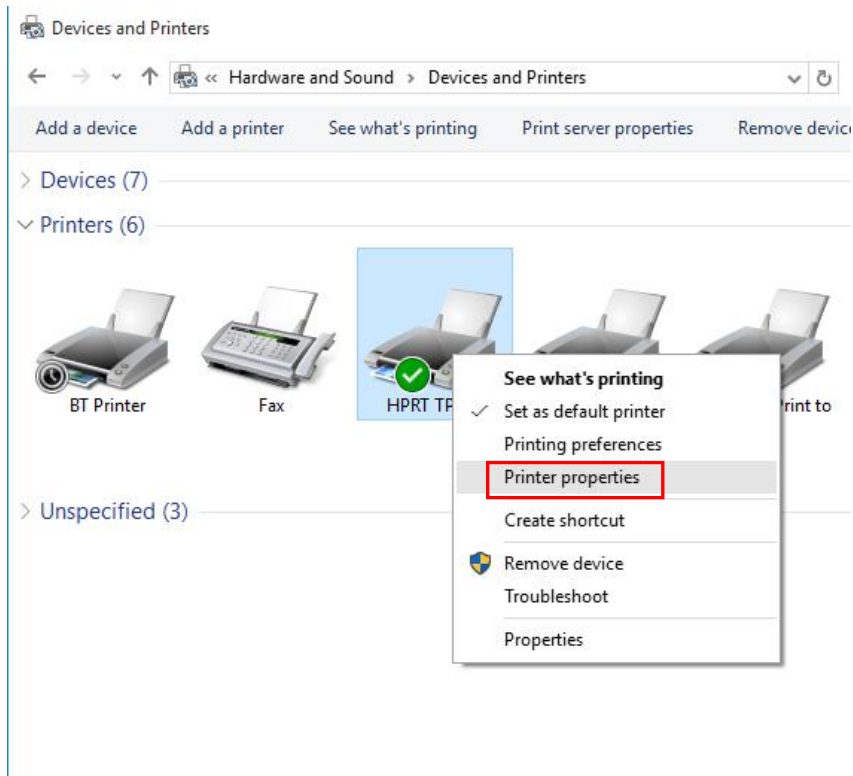
10. Right click the Bluetooth icon, and choose “Properties”.



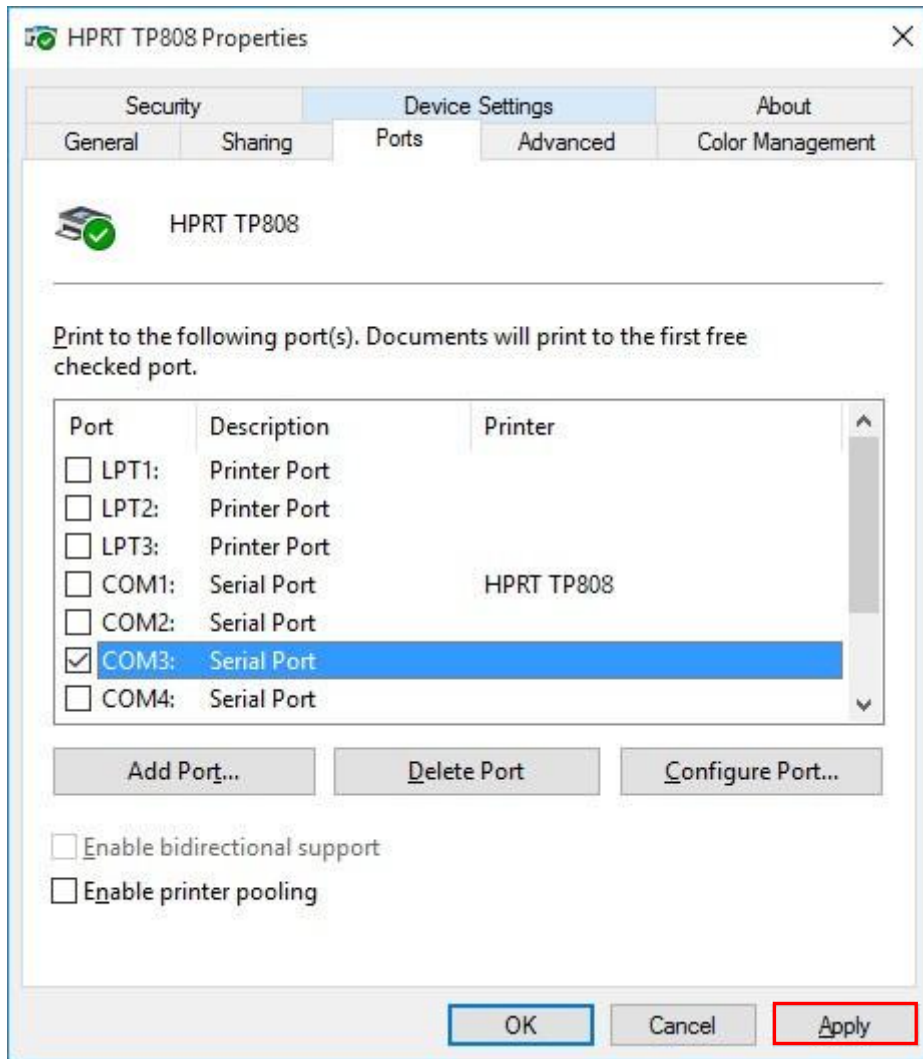
11. In the Bluetooth properties, choose "Services", that is connected to a Bluetooth port



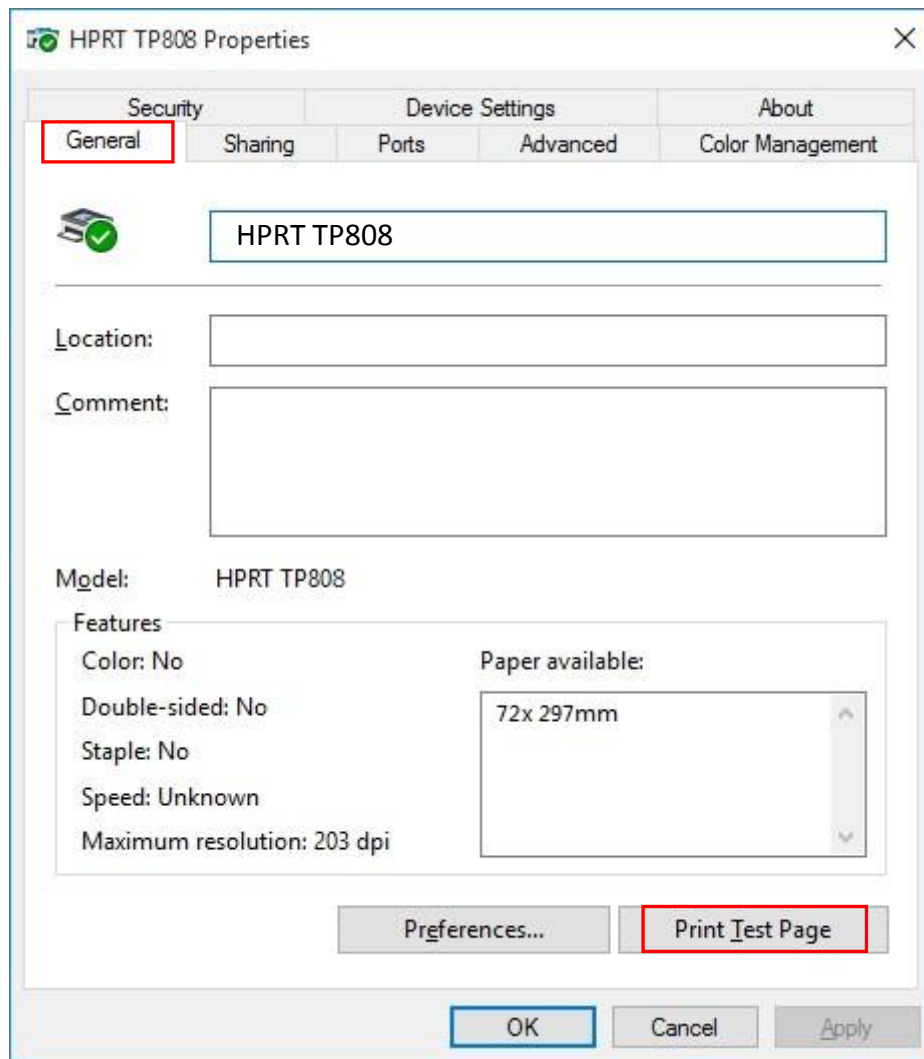
12. Go into the “Devices and Printers”, you can see the corresponding printer icon, right click and choose “Printer properties”.



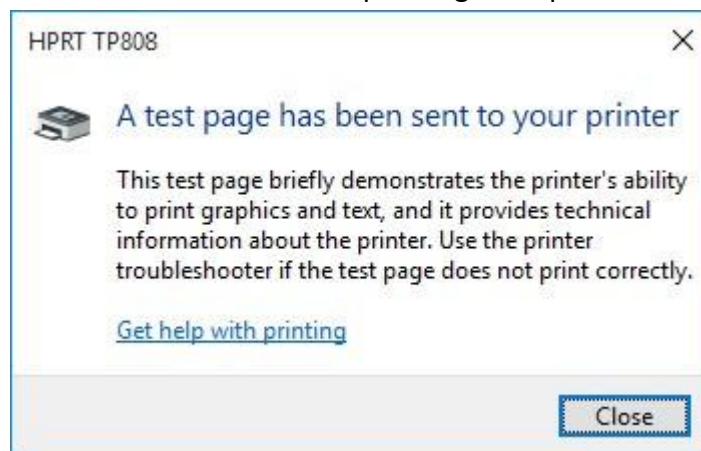
13. In the “Printer properties”, choose “port”, select (11)step that port, then click “Apply”



14. Choose “General”, then click “Print Test Page”.



15. If the print test page can print normally, the following figure is displayed; if fails, check whether Bluetooth is disconnected or the corresponding COM port is occupied.



**Note:** If using a laptop you can ignore the second and third steps.